



SOCIETY HILL

Reporter

www.societyhillcivic.org

Foglietta Plaza Plans and Possibilities



Nandi, the 16th-century Sacred Bull of Shiva, is currently in storage.

The Society Hill Civic Association (SHCA) invites all neighbors to its General Membership Meeting on March 16. Representatives from the Interstate Land Management and Delaware River Waterfront Corporations will provide updates on several exciting projects being considered for the development of Foglietta Plaza, one that might have a large impact on our community.

As you know, the plaza at 2nd and Spruce Streets sits on an existing cap over I-95 and is currently an underused public space that lacks purpose and imagination. Its renovation will improve a direct connection from Society Hill to the waterfront, while also establishing an inviting and peaceful public space.

One potential idea is to transform the existing paved plaza into a new green space that houses the World Sculpture Garden pieces. This garden

was originally created in 1976 to showcase sculptures from all over the world and was located just south of the Hilton Hotel. Returning these sculptures to a more prominent location for public viewing is an integral part of the redevelopment of Penn's Landing.

Speakers Ed Kirlin and Joseph Forkin will discuss this and other uses for the property, including a proposed addition to the veterans' memorials. Community input is welcomed.

Remember that everyone is invited to attend our General Membership Meeting. Simply arrive at Pennsylvania Hospital's Zubrow Auditorium, located on the first floor inside the main entrance at 8th Street near Spruce, before 7:30 p.m. All members interested in Society Hill issues are welcome at our monthly Board Meeting, 5:45 p.m., at the Great Court Conference Room.

CHECKLIST

- ✓ See a Franklin light that's out? Call 311 to report it.
- ✓ Use your home security system! Let it help protect you.
- ✓ See graffiti on our neighborhood public spaces? Email todd@graffitiremovalexperts.com. For removal on private property, call 311 or 215-686-8686.
- ✓ Keep our sidewalks safe. Turn on your front door lights after dark every night.
- ✓ Check your brick sidewalks for winter damage. See page 7 for how to "Fix Your Brix."

WEDNESDAY

March

16

5:45 p.m.

MARK YOUR CALENDAR

Society Hill Civic Association Meetings
Wednesday, March 16, 2016

Pennsylvania Hospital 8th and Spruce Streets

Board of Directors Meeting

Pennsylvania Great Court Conference Room
All SHCA members are welcome.

7:30 p.m.

General Membership Meeting

Pennsylvania Hospital Zubrow Auditorium
All neighborhood residents are invited to attend.

Speakers:

Ed Kirlin, Interstate Land Management
Joe Forkin, Delaware River Waterfront Corporation
Future development possibilities for Foglietta Plaza

Topic:

BLIZZARD OF 2016



Society Hillers dug out from almost two feet of snow, Philadelphia's fourth-largest snowfall ever.



SOCIETY HILL

Reporter

**NUSA
2014 & 2015
Award
Winner**



mw designgroupllc.com
267.872.8814

Managing Editor

Sandra Rothman

Columnists

Marilyn Appel
Claire Batten
Jane Biberman
Matt DeJulio
Julie Featherman
Martha Levine
Keri White

Contributors

Brian Kracyla
Bob Kramer

Graphic Design

Judy Lamirand
Parallel Design, Inc.
judy@parallel-design.com

Press Release Liaison

c/o Matt DeJulio
mattdejulio@aol.com

Advertising Manager

Lenore Hardy
hardy@drexel.edu

Submission Deadlines

May/June Issue
Advertising: April 1
Editorial: April 1

Society Hill Civic Association

P. O. Box 63503
Philadelphia, PA 19147
Tel. 215-629-1288

Website

Find past issues in color
at www.societyhillcivic.org.

Submissions

If you have news that would be of interest to Society Hillers, email Sandra Rothman at sandra.rothman@aol.com. Materials must be submitted in writing and include the name of a contact person. Edited submissions will be considered for publication if space permits. Letters to the Editor must be signed, with contact information.

SHCA Mission Statement

The aims and purposes of SHCA are to promote the improvement of the Society Hill area of Philadelphia, including its cultural, educational and civic activities, and the preservation and restoration of its historic buildings; to represent the residents of Society Hill in matters affecting the City of Philadelphia generally and Society Hill in particular; and to interpret the value and significance of Society Hill to the public.

SHCA Board Officers and Directors

President

Robert Curley

First Vice President

Kim Williams

Second Vice President

Martha Levine

Recording Secretary

Diane Stein

Treasurer

Marc Feldman

Directors at Large

Georgine Atacan, George Dowdall, Diane Harrison, Sissie Lipton, Fred Manfred, Mary Purcell, Heather Steiner, Vijay Verma

Northeast Quadrant

2016 Lisa Unger
2017 George Kelley
2018 Robert Kramer

Northwest Quadrant

2016 Amy DeMarco
2017 Norman Lieberman
2018 Mary Tracy

Southeast Quadrant

2016 Jeff Berry
2017 Barbara Gelman
2018 Gail Hauptfuhrer

Southwest Quadrant

2016 Daniel Horowitz
2017 Carolyn Ambler Walter
2018 Martha Moore

parallel design

Find our designs online.

BeyondTheLibertyBell.org
Parallel-Design.com

215-476-4040

Logos
Websites
Banners
Newsletters
Books
The Award-Winning Society Hill
Brochures
Invitations
Reporter!

COMMITTEE UPDATES

5th Street Development

As this newsletter goes to press, we can report on the most recent events concerning the development of the properties at 309 and 314-26 S. 5th Street.

The community will remember that the Alterra Property Group, LLC obtained a zoning-use permit in late August. To actually build on the site, Alterra would have to first obtain a building permit and go through a Historical Commission review process, which they have not yet done.

This permit was abandoned on February 8. The abandonment had the effect of cancelling the Permit Appeal Hearing that was scheduled for February 10. The abandonment of the permit was without prejudice, meaning that Alterra could apply for another permit at anytime. Alterra did exactly that on February 11.

The 5th Street Development Committee believes that the original permit was abandoned and a new permit was obtained to address some or all of the technical deficiencies raised by SHCA's initial appeal. The committee is in the process of obtaining the new permit application and the plans filed with the new permit. Once the material has been obtained and reviewed, the committee will be in a position to decide whether another appeal is possible. An appeal, if made, must be filed within 30 days of February 11.

SHCA has a campaign to fund the 5th Street Development efforts to get the most appropriate design and use of the commercial property at the Acme site. We need your help and ask you to make a contribution to this fund. Please see page 23 for the donation form or the online option. A heartfelt thanks to all who have already donated.

Sign up to receive updates from the 5th Street Development Committee in SHCA's weekly email blasts. Contact Matt DeJulio at 215-629-1288 or mattdejulio@aol.com.

SHCA BOARD ELECTIONS

Seeking Nominations for Directors and Officers

The SHCA Board of Directors and Officers is an organization of dedicated and hard-working neighbors who embrace SHCA's mission (see page 2) and labor on behalf of more than 5,000 residents and 3,600 households. If you care about our unique, vibrant community, consider rolling up your sleeves and becoming part of the team.

This year's elections will take place at our May 18 General Membership Meeting. Members will elect a president, two vice presidents, a secretary, a treasurer and up to eight directors at large — all for one-year terms. Also, four of the current 12 quadrant directors will finish their three-year terms and will need to be replaced.

SHCA's Nominating and Election Committee proposes individuals for these positions. Additionally, others may be nominated by petition. To nominate yourself or a neighbor, submit a petition signed by 10 SHCA members. Nomination for quadrant director requires the signatures of 10 residents of that quadrant. Although not required, the com-



Quadrant Confusion? Society Hill is divided into Northeast, Southeast, Northwest and Southwest quadrants for the purpose of electing its Board of Directors. The dividing line between the east and west quadrants is 4th Street. Spruce Street is the dividing line between the north and south quadrants.

mittee appreciates information about the nominee. Those being recommended for a position must live within the boundaries of Society Hill, be at least 21 years of age and be a member of SHCA.

Visit www.societyhillcivic.org for more information about our civic association, its board and nominating process. Submissions must be received by March 30 in order to be considered. Nominations will be listed in the next issue of the *Reporter*. Send nominations to SHCA administrator Matt DeJulio, at mattdejulio@aol.com.

In This Issue...

Page 9
Philly Food Lovers:
FRIEDA for generations

Page 13
Philly Food Lovers:
El Regalo Kitchen

Page 14
Out and About: Guide to
Historic Society Hill

Page 17
South Street Headhouse
District: Fabulous Fabric Row

Page 19
Headhouse Farmers' Market:
Three Springs Farm

Page 21
Electric Vehicle Chargers
Update

Page 23
5th Street Development
Campaign Donors

Page 26
Nifty Neighbors in My Own
Backyard: Deen Kogan



Philadelphia Gardens, Inc.

GARDEN DESIGN + INSTALLATION
+ NATIVE HABITAT INSTALLATION by Toni Ann Flanigan
215.951.9193 // www.philadelphigardens.com

For Students Who Always Ask "Why?"—

AN ENDLESS WORLD OF "WOW"

FASCINATION
FOREVER BRIGHT

friends-select.org **FRIENDS SELECT**

www.edwardjones.com

Are you invested properly? Get a second opinion.

David Rucki
Financial Advisor
313 Spruce St
Philadelphia, PA 19106
215-922-2906

Edward Jones
MAKING SENSE OF INVESTING

Member SIPC

Sweet Spots!

Bassetts Ice Cream
Baler's Donuts
Chocolate by Mueller
Sweet as Fudge Candy Shoppe
Pennsylvania General Store

Fresh LOCAL Every Day! **READING TERMINAL MARKET**

READING TERMINAL MARKET
MON-SAT 8-6 & SUN 9-5 • \$4/2HR PARKING
12TH & ARCH STREETS • 215-922-2317
www.readingterminalmarket.org

SATURDAY, MARCH 5

A Guide's View Of Philadelphia

This annual series on Philadelphia history, architecture and culture is offered by the Association of Philadelphia Tour Guides and is designed to prepare tour guides and site docents for full professional certification.

It has also proven popular for Delaware Valley residents fascinated by Philadelphia's rich history and visitor attractions.

The group meets at Independence Visitors Center, Liberty View Ballroom on March 5, 6, 12 and 13. For information regarding time and cost, call 215-627-8680 or visit www.phillyguides.org.

Thanks and Goodbye

It is with sadness that the *Reporter* says goodbye to Jim Murphy, who wrote the column "Exploring the City" beginning in 2011, and was an invaluable proofreader. Jim is the consummate professional, as well as a kind and generous man. His way with words and attention to detail helped make this newsletter into an award-winning publication. We will miss him, and we wish him well in his future endeavors.

SUNDAY, MAY 22

2016 Open House And Garden Tour

Mark your calendars for Sunday, May 22, from 1 to 5 p.m., when the 2016 Open House and Garden Tour will open some of Society Hill's loveliest places to the public — eight homes, two private gardens, a museum house and a historic house of worship. It's a memorable day for a good cause, since 100 percent of the funds raised will come back to SHCA for neighborhood improvement projects.

We are still looking for interesting houses or condominiums. Please let us know if you're aware of historic or modern homes that might be good candidates for our tour.

Also, we always need volunteers to be hosts in the houses. If you volunteer for two hours in a house, you will get one free tour ticket. For house and volunteer recommendations, contact Martha Levine at marthalev6@gmail.com or 215-629-0727. For tickets and information, contact Matt DeJulio at 215-629-1288 or mattdejulio@aol.com.



Visitors and volunteers at the 2015 Open House and Garden Tour.

Proud supporters of The Society Hill Civic Association

k Y O D E R design *modern design. luxury for real life.*

architecture. interiors. www.kyoderdesign.com 206 S. THIRD STREET. PHILADELPHIA, PA 19106

Sundays Never Looked
So Good!



Positano Coast BY ALDO LAMBERTI
RESTAURANT, CRUDO & WINE BAR



Join Us for Sunday Brunch
with **Bottomless** Mimosas or Sangria!

11 AM TO 3 PM

212 Walnut St, 2nd Fl, Phila • 215.238.0499 • PositanoCoast.net

R. CHOBERT PAINTING
Residential | Commercial | Interior | Exterior

www.rchobertpainting.com

Michael Chobert 215-389-7788
Fax 215-755-6655
rchobertpainting@aol.com
641 Reed Street, Phila. PA 19147

Creating Beauty Since 1967



Intelligent Exercise with Profound Results!

New client special:
Three one-hour private sessions for \$125.00 at our fully equipped Center City studio at 9th and Spruce Streets.



PilatesByPamela

Stott Pilates Certified Instructor
267-519-3639
pilatesbypamela@gmail.com

www.pilatesbypamela.com



LANDSCAPE & HARDSCAPE SERVICES

- Patios, Walkways, Driveways
- Stone, slate, Brick, Pavers
- Stone Walls, Retaining Walls, Fencing
- Pergolas, Arbors & Trellises
- Ponds, Fire Pits, Inground Pool Decks
- Shrub & Tree Installations, Removals & Replanting
- Seeding, Sodding
- Large and Small Yards



Call for free estimate 215-844-TREE (8733)
www.mcfarlandtree.com

Spend your summer with Settlement Music School!



SUMMER SESSION DATES:
JUNE 27 to AUGUST 5

CAMPS
WORKSHOPS
CLASSES
ENSEMBLES
LESSONS

www.smsmusic.org/summer



Mary Louise Curtis Branch
416 Queen Street
Philadelphia, PA 19147
215-320-2601



Z O N I N G A N D H I S T O R I C P R E S E R V A T I O N

BY LORNA KATZ-LAWSON

Neighborhood Plans, Proposals and Projects

Steering Group for the Neighborhood Plan

As readers will recall, the Neighborhood Plan will be used as a basis for remapping properties that are currently incorrectly classified. These could be properties incompatible with the character of the community, or those being used inappropriately (such as industrially classified properties used as residences). The plan can also create districts for facilities or uses desired by the community, but not yet available in it.

The steering group has been meeting weekly to gather information from the city and other sources for the planning process, and then will write the Request for Proposal (RFP) for a planner to guide us through the project.

The January meeting with members of the Philadelphia City Planning Commission (PCPC) informed the group on how the process evolves into legislation. PCPC aids all of Philadelphia's communities, as well as serving City Council. Its approval is a recommendation to Council, not law. PCPC informed us of new data mapping and studies that are being issued this spring. The ones currently available date back to 2006 and are less accurate. PCPC offered to act as a member of our steering group and to review and comment on the draft for our RFP. They also offered to identify stakeholders to assure the work is truly representative of the community at large.

At the point of this writing, the RFP is about 90 percent complete, has been reviewed by ZHP Committee and will be ready for PCPC review in the week of February 21.

Mother Bethel Memorial/Parking Lot

A formal Registered Community Organization meeting for a zoning review of the proposal to erect a memorial to Richard Allen on the corner of Lombard and 6th Streets and to improve the existing parking lot took place in late January. At issue were parking spaces too small by six inches and a garden wall that exceeded the allowable height and was solid brick instead of perforated as required by code.

The application had no public opposition on the points of the variance. ZHP Committee could not see any negative impact on the community resulting from the proposed design and voted unanimously to support the application.

700 Pine Street

ZHP heard a presentation of the zoning application for an addition consisting of a two-car garage, second-story bedroom addition and third-story roof deck. The addition would fill the site and leave no open space. Neighbors both for and against the proposed changes exchanged views and received responses from the owners' attorney and architect.

The ZHP Committee did not accept the argument put forth by the owner's representatives for "hardship," which would justify the need for the multiple variances. The committee stated that the increased bulk and height would have a negative impact on light and air in the public realm and strongly believes that it is essential to preserve open space which seems to be continuously under assault. In addition to its potential to improve health, open space is a character-defining feature of the Society Hill neighborhood. Open-space gardens are what sets Society Hill apart from most other Center City neighborhoods. ZHP Committee voted unanimously to oppose the application.

410 South Front Street

Despite continued discussion among Toll Brothers, near neighbors and SHCA, the issues of the lack of trees on Front Street and shielded balcony lighting remain unresolved.

Crosstown Coalition

SHCA has continued to work with the Crosstown Coalition to try to influence proposed legislation before the process progresses so far that it is difficult or impossible to introduce changes that would better serve civic associations.

Coalition President Steve Huntington and Zoning Chair Joe Schiavo drafted a six-point position paper titled "Goal: Institutionalize Civic Input in the Land Use Legislation Process." Each point states a goal, the issue it is addressing and a proposal for action to achieve the goal. The paper was distributed to the Coalition's member associations for approval. The ZHP Committee met and discussed the paper and voted unanimously to recommend approval of it to the SHCA Board. The paper may be read on www.philacrosstown.org.

Lorna Katz-Lawson is a practicing architect with John Lawson Architects. She has been a Society Hill resident since 1973 and currently chairs SHCA's Zoning and Historic Preservation Committee.

5th Street

Development Site

Refer to separate report of the 5th Street Committee on page 3.



All Gloria Dei's venerable trees remained standing in Hurricane Sandy, preserving the historic graves below.

HISTORIC TREES UNHURT IN HURRICANE SANDY

... Thanks to Liberty Tree & Landscape Management

When Hurricane Sandy pummeled the city in late October, 2012, not one of the many 200+-year-old trees at Gloria Dei Church on Columbus Blvd. came down. Pastor Joy Segal credits that feat to the outstanding work of Liberty Tree and Landscape Management.

See why so many people recommend Liberty Tree on Angie's List. *Your satisfaction is guaranteed!*

Some Other Liberty Tree Clients:

- Pennsylvania Hospital* *Elfreth's Alley*
- Rittenhouse Square* *National Park Service*
- Washington Square* *Bartram's Garden*
- Philadelphia Cricket Club*



215. 886. 6111 | Orelan, Pa
 215. 725. 3637 | Philadelphia, Pa
 215. 572. 6937 | Fax
www.libertytreecare.com

Mike Duffy
 Certified Arborist
 PD-1766A



ADORNAMENTI

1106 Pine Street
 215.922.2722

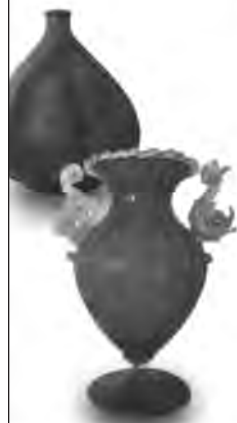
**Collection
 of
 Art-To-Wear Jewelry**



SHOW OF HANDS

1006 Pine Street
 215-592-4010

**Collection
 of
 Mid-Century Murano Glass
 and
 Contemporary Crafts**



We contribute to Welcome Basket.
 We are located on Historic Antique Row.



COMMUNICATION MADE EASY



ON DEMAND PRINTING SOLUTIONS

Media Copy is a full service digital printing company with offices in Center City Philadelphia, and the suburbs. State of the art technology, extraordinary customer service and attention to detail place us apart from the competition. Our infrastructure allows us to provide our customers with high quality products in a cost effective fashion. From conception to completion, the basic to the complex, we are on the job with the personal attention you should expect.

Philadelphia Location:
 1310 Sansom Street · Philadelphia, PA 19107
 phone: 215.717.5151 · fax: 215.717.7400

Media Location:
 11 East State Street · Media, PA 19063
 phone: 610.566.8499 · fax: 610.566.4513

www.mediacopyonline.com

PHILLY FOOD LOVERS

BY CLAIRE BATTEN

Serving Up Social Change with Your Croissant

FRIEDA for generations is half café and half social experiment, with a mission to (re)connect generations by providing a warm and welcoming space for people of all ages to exchange skills and ideas, much like European coffee houses of the last century.

This project, cofounded by German communications designer Thomas Steinborn and Le Cordon Bleu-trained chef David Wong, has been in the making for almost two years, with extensive research in Europe, mainly in Germany and the UK. It addresses the conflicts and loneliness of aging in our society that arbitrarily labels anyone over 50 as old.

It's a remarkable place, much more than your average coffee shop. Aside from offering breakfast, lunch and afternoon tea, this "Café, Atelier & Store" is infused with a clear sense of purpose. Attention to detail and thinking outside the box are crucial to Steinborn, who aims to generate in-house social networking and promote made-in-Philadelphia design. Everything, including the furnishings, is for sale.

The menu includes a delicious selection of freshly baked goods, lovingly developed by young students under the watchful eye of Wong. Recently, we enjoyed a breakfast croissant with prosciutto and Brie, accompanied by a homemade apple chutney made by an intergenerational team of cooks. Soon we plan to try the exquisite afternoon tea, featuring smoked salmon canapés, chicken choux mini pastries, cheddar brioche topped with house-brined cucumbers and a list of desserts that looks enticing.

In just a few months, Frieda has become a meeting place for different groups to do such diverse

things as play mahjong, discuss a book or make origami puppets. It's a lively, cross-generational community space that also welcomes children and their parents; the kids can explore the playhouse while mom and dad enjoy a bite.

Frieda employs a number of senior citizens, as well as young students. These two demographics work together in a variety of endeavors: passing on baking skills in the kitchen, giving quilting tips from behind a sewing machine or helping a startup business balance their books on a laptop. They ask the question: how can society make better use of the resources of seniors who may have stepped out of the workplace but have so much to offer and want to help successive generations succeed and grow?

Apart from food items, there are handcrafted products made in outreach programs throughout Philadelphia. These include seasonal cards and ornaments, oversized, printed cushions and handmade packaging for the baked goods — like the unique row-house cookie boxes.

Stop by and see for yourself. Grab a flyer about the programming for the month, and enjoy a treat made just that morning by one of their young bakery students.

Claire Batten and **Keri White** are the dynamic duo behind Philly Food Lovers. They are business partners in KCC, a marketing and copywriting agency.



FREIDA for generations
312 Walnut Street
215-600-1291
friedaforgenerations.com



SONOS

ENJOY ALL OF YOUR MUSIC,
IN EVERY ROOM OF YOUR HOME,
WIRELESSLY.

No wires and no drilling.
Ask for a FREE in home consultation.



Apple Specialist

116 S. 13th Street
Philadelphia, PA
215-599-0794
springboardmedia.com

Piano Lessons
for all ages

Beiling Foss
Piano Teacher

931 E Moyamensing Ave.
Philadelphia, PA 19147

(440) 289-6289

dolce86@ymail.com



Old Pine Street Church
Established 1768



Where History, Faith,
Message, Music &
Fellowship intersect at

412 Pine Street

Sunday Worship
10:30am

215-925-8051
www.oldpine.org

**PHILADELPHIA
WINDOWBOX COMPANY**



phone 610-310-1973

info@philadelphiawindowboxcompany.com
www.philadelphiawindowboxcompany.com



JEFF CABOT, DMD

WWW.QUEENVILLAGEFAMILYDENTISTRY.COM

215-925-7330



**WE PICK UP
FURNITURE DONATIONS
FAST | FREE | TAX-DEDUCTIBLE**

MOVING? DOWNSIZING? REMODELING?

Your donation supports self-determination
in the hands of the African community.



Tyron Lewis
Community Gym



Uhuru
Health Fest



Uhuru
Jiko Kitchen

UHURU FURNITURE
& COLLECTIBLES
...driven by African self-determination

uhurufurniturephilly.blogspot.com

215-546-9616 | 832 N. Broad St | www.apedf.org

An economic development project of the African People's Education and Defense Fund

The **CENTER**
for **GROWTH**

psychological counseling • therapy • support groups

**Achieve Greater Joy
Deepen Intimate Relationships
Get More Satisfaction Out of Life**

- Individual Counseling
- Couples Therapy
- Sex Therapy
- Imago Counseling
- Support Groups

Call For Appointment
(267) 324-9564

Present this
ad at your 1st
session & your
2nd session is
FREE.

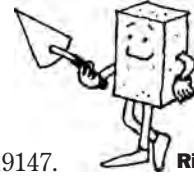
233 S. 6th Street, Suite C33, Philadelphia, PA 19106
www.therapyinphiladelphia.com



‘FIX THE BRIX’

BY MARTHA LEVINE

Spring: It’s Time to ‘Fix the Brix’



Rick the Brick

Join the 163 homeowners to date who have made their sidewalks safer for all of us by participating in the “Fix the Brix” program. Anyone wishing to Fix the Brix can receive a sizable subsidy: 40% of the total invoice, capped at \$400 for current SHCA members and \$300 for non-members.

Tree roots, loose bricks and settling soil make sidewalks unlevel. Take a look at your own front sidewalk and, if it presents a tripping hazard, please contact us. Need a list of masons or tree experts? We can provide neighbor-recommended contractors to work with you.

Here’s how to start:

- 1 Take a photo of your problem sidewalk and email to marthalev6@gmail.com.
- 2 Contact one or more masons or arborists to give you an estimate.
- 3 After the work is done, make a copy of your paid bill, cancelled check and an after photo.

4 Mail to SHCA, P.O. Box 63503, Phila, PA 19147.

5 Receive a subsidy check within a few weeks.

Tip: When having your tree pit enlarged or created, unless you have blooms around the tree, it’s best to avoid high borders, especially Belgian block. High surrounds on a tree pit can be a tripping hazard. The photo at the right shows the best type of tree pit, as seen on 300 Walnut near historic sites.



For more information, contact Martha Levine at 215-629-0727, email: marthalev6@gmail.com.

Martha Levine, an active SHCA board member, has created and chaired many projects, such as Block Coordinators, “Fix the Brix,” Welcome Baskets and the Franklin lights restoration project. She also co-chairs the yearly house tour.

The city recommends that homeowners do not use Belgian block or elevated brick surrounds on tree pits, as they cause a tripping hazard. It is best to have a flat sidewalk leading up to the tree pit, which also allows better drainage of rainwater to nourish the tree.

JOIN US FOR
Spirits and History!

When: May 13, 2016
(Friday the 13th!)
7-10pm

Where: Gloria Dei (Old Swedes’) Church
916 Swanson St.
Philadelphia, PA 19147

Tickets available at www.preserveoldswedes.org
\$50 per person

Featuring:

- Spirited tastings to match the times of eight of our illustrious permanent residents!
- Jazz Trio courtesy of The Jazz Sanctuary
- Cocktail Party Hors d’Oeuvres
- Live auction at 8:30

Gustavus Hessellius, 1600’s – <i>Vodka</i>	Peter Cruise, 1800’s – <i>Craft Beer</i>
John Douglas, 1700’s – <i>Gin</i>	Amandeus Johnson, 1800’s – <i>Aquavit</i>
George Ord, 1700’s – <i>Rum</i>	The Peales, 1800’s – <i>Wine</i>
John Stille, 1700’s – <i>Whiskey</i>	Alexander Wilson, 1800’s – <i>Scotch</i>

Please thank and support our sponsors!

Proceeds benefit Historic Preservation at Gloria Dei (Old Swedes’) Church
Historic Gloria Dei Preservation Corporation is a 501c3 charity.
All donations are fully tax deductible to the extent allowed by law.

PHYSICK HOUSE PLANT SALE

“THE ANNUALS EVENT!”

321 South Fourth Street
Friday, Saturday & Sunday, April 29 & 30 and May 1
10 AM-6 PM

A Sale-Before-The-Sale with Drinks and Nibbles
Thursday, April 28, 5-7 PM, Admission \$10.00

“All proceeds benefit the historic houses and programming of PhilaLandmarks”

Philadelphia Society for the Preservation of Landmarks

www.PhilaLandmarks.org



— THE ATACAN GROUP —

Luxury Real Estate Experts

Discover Everything About Society Hill Real Estate!

What's for sale?

How much did it sell for?

Who's moving?



ATACAN GROUP
215-917-1213

www.CenterCityRealEstate.com/SocietyHill

SOCIETY HILL'S LOCAL SOURCE FOR REAL ESTATE

Selling the Society Hill lifestyle since 1999



KELLER WILLIAMS
CENTER CITY
215-627-3500

PHILLY FOOD LOVERS

BY CLAIRE BATTEN

An Artist in the Kitchen

Mexican food is one of the most popular ethnic cuisines in the United States, but much of the so-called Mexican food consumed here is actually a Tex-Mex fusion. Truly authentic Mexican cuisine is highly evolved, combining influences from Aztec, European (largely Spanish) and African cultures, as we discovered when we participated in a series of cooking classes run by Ada Trillo.

Ada is a fine artist who paints oversized abstract paintings influenced by her Mexican heritage, but she also has a second string to her bow. She creates impeccable Mexican dishes through her cookery school **El Regalo Kitchen**.

Ada brings a fine eye and a feeling for color to re-create dishes from multiple regions of Mexico, as demonstrated during the first cooking class we attended, which focused on three seafood ceviches.

In the course of the class, we chopped, peeled and diced the ceviche marinade for three types of seafood. Using the same basic ingredients, but with subtle regional variations, we tasted our way through scallop, shrimp and snapper ceviches. A fellow student described the class: "It was a true sensory experience. Ada's apartment is lovely, with the open kitchen perfectly suited to lots of cooks. Her artwork provides a backdrop of color and beauty, and her hospitality is warm and gracious. It felt like attending a party at a good friend's house where you help with the preparation."

El Regalo Kitchen's cookery classes are a genuine learning experience. As someone who is not particularly confident using chiles, fresh or dried, I walked away from the salsa class feeling like an expert. I now know where to buy both stock and specialist Mexican ingredients. Check out the Mexican supermarket on 9th and Washington Streets for fresh produce and pantry foods.

Interested in trying a class? We took our first in Ada's beautiful apartment just off Rittenhouse Square, and then sat down with a group of friends to eat what we had created. The second class I attended was graciously hosted in the home of Society Hill neighbor Elie Rouco. Again we chowed down on the Mexican dishes we made. Ada provided a maid service to clean up the kitchen — it couldn't be any easier. So the choice is yours. Get together a minimum of four friends and host in your own home or Ada's apartment.

If you are interested in learning how to cook sophisticated Mexican fare, contact El Regalo Kitchen directly at www.elregalokitchen.com or check out Ada's Facebook page. The classes are reasonably priced at \$75 a head for the ceviche class and \$45 each for the trio of salsas. Best of all, expect to try one of Ada's famous mojitos or an ice-cold margarita while you slice and dice those chilies.

To whet your appetite, here's the recipe for one of the salsas I made. It is unusual and very rich, because it features toasted and crushed pumpkin seeds. This salsa works well with fish.



SALSA MACHA DE PEPITAS

Ingredients

- 5 dried morita chiles
Nicknamed "little cherry chiles."
- 2 dried cascabel chiles
Nicknamed "rattle chiles," because when they are dried and shaken, they sound like angry rattlesnakes.
- 1 splash of canola oil for toasting
- ¼ cup of pumpkin seeds
- 2 garlic cloves
- 1 cup of olive oil
- Pinches of sea salt, allspice and Mexican oregano for seasoning
Mexican oregano is different from regular oregano. It is much more intense and pungent, so a little goes a long way.

Preparation

- Toast the dried chiles in canola oil. Watch carefully so they do not burn, or they will become bitter.
- Toast pumpkin seeds with the garlic cloves and set aside.
- With mortar and pestle, mash garlic cloves, add dry chiles and mix everything together.
- Add pinches of salt, allspice and oregano.
- Add olive oil to the mixture and stir to combine all ingredients thoroughly.
- Let the salsa rest for an hour and then serve. Either spoon the salsa on top of fresh fish before baking, or cook fish and then serve salsa on the side with tortilla chips.



COSMOS
FINE NAIL SALON

PHILADELPHIA'S SALON FOR MEN & WOMEN
[NAILS ~ WAXING ~ MASSAGE]

<p>1204 walnut street (215) 627 - 1020 mon-wed: 930a - 700p thurs-fri: 930a - 800p sat: 930a - 600p sun: 930a - 600p</p>	<p>1308 sansom street (215) 545 - 5456 mon-wed: 930a - 700p thurs-fri: 930a - 700p sat: 930a - 600p sun: closed</p>
--	---

RESERVATIONS RECOMMENDED

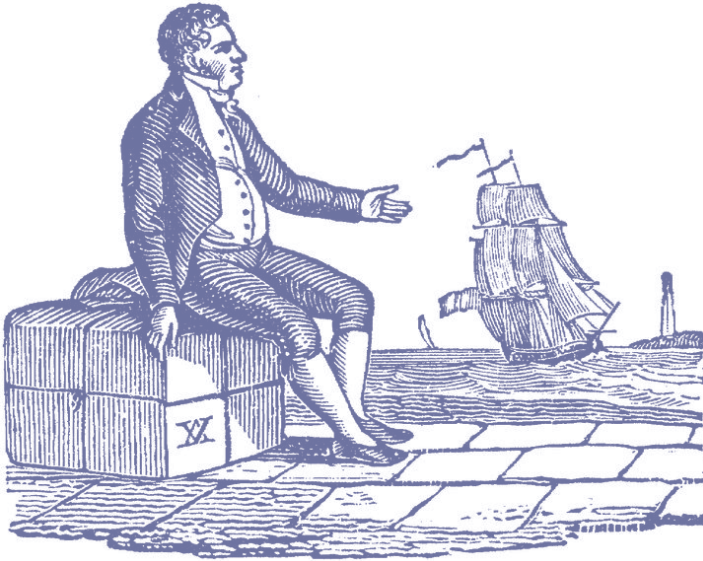
OUT AND ABOUT

Welcome to Society Hill

SHCA has just published the 20th anniversary edition of the *Guide to Historic Society Hill*. This beautifully produced, 68-page spiral-bound booklet takes residents and visitors on a walking tour of Society Hill, highlighting many historic properties that often are overlooked in the typical visitors' guide to the city. The handbook includes a color photo of every building, and descriptions

of new buildings have been added. Thanks to committee members Amy DeMarco, Bonnie Halda, George Dowdall and Matt DeJulio and designer Judy Lamirand for a job well done.

Copies are **free to all SHCA members**. Non-members may use the coupon opposite the membership story on page 24 to order copies.



Davis-Lenox House
217 Spruce Street



Neval House
338 South 4th Street



Curtis Publishing Company
601-45 Walnut Street



Girard Row
326-334 Spruce Street



Biddle House
713-715 Spruce Street

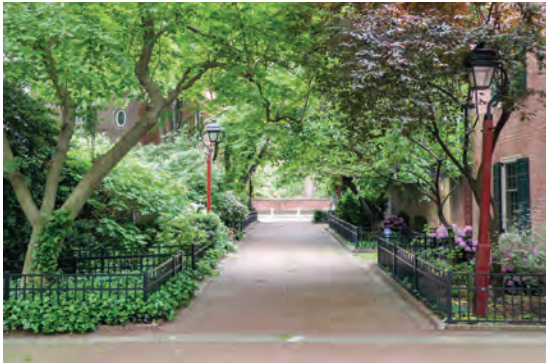


Bingham Court
Between 3rd & 4th Sts, Spruce Street & Willings Alley

Welcome

OUT AND ABOUT

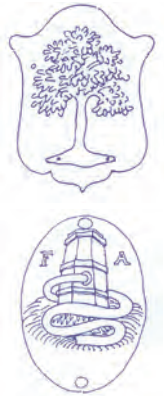
Take a Self-Guided Walking Tour



A mid-block greenway



Pennsylvania Hospital
801-845 Pine Street



Firemarks



Williams-Mathurin House
427 Spruce Street



Vilna Synagogue
509 Pine Street



Physick House
321 South 4th Street



Rhoads-Barclay House
217 Delancey



Farm Journal Building
230 West Washington Square



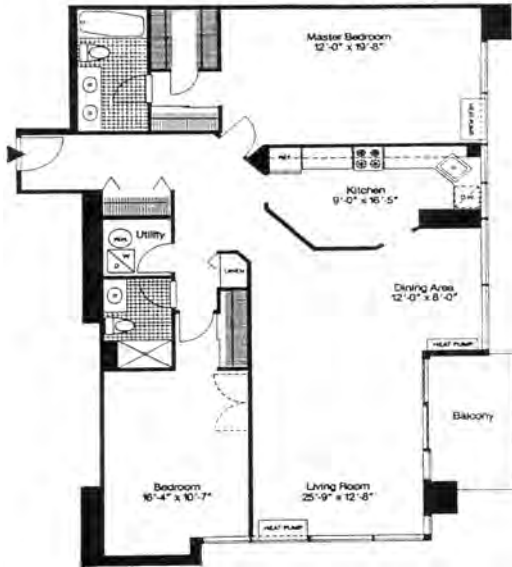
St. Peter's Church
3rd & Pine Streets

Bonnie Halda is a freelance photographer specializing in historic buildings and the urban environment. She's also a historical architect with the Northeast Regional Office of the National Park Service.

Bonnie's photos of Society Hill can also be found in a calendar that may be ordered online. (Search for "**Bonnie Halda Calendar**" and you'll find the page.) All proceeds benefit SHCA.

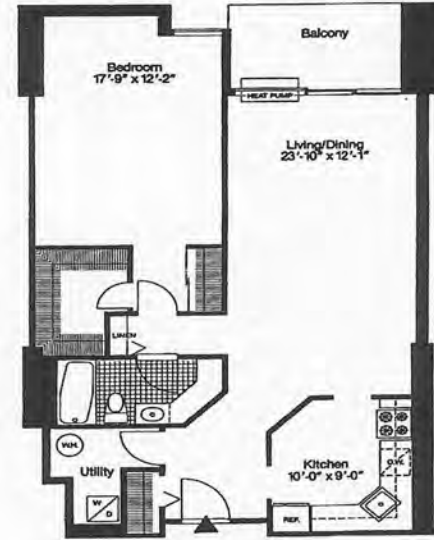
INDEPENDENCE PLACE

233 - 241 S. 6TH STREET



Two Bedroom on a High Floor with a balcony and sunset views

Recently updated two bedroom, two bathroom with a bright and spacious living room and dining room, upgraded kitchen with dark cherry cabinetry, stainless steel appliances and granite countertops, excellent closet space throughout.
1,387 sf | **\$769,900**



Spacious 1 Bedroom with beautiful sunset views

Large 1 bedroom featuring a renovated open kitchen with built-in dining area, a custom renovated bathroom, spacious master bedroom with walk-in closet, washer/dryer in unit, and hardwood floors throughout.
940 sf | **\$379,900**



Beautifully updated One Bedroom Home

Pristine condition one bedroom home with sunrise views, renovated eat-in kitchen with French Country cabinetry, granite countertops, stone backsplash, stainless steel appliances, recessed lighting, spacious living/dining area, fully renovated bathroom, bamboo flooring, and w/d.
850 sf | **\$343,000**

SOUTH STREET HEADHOUSE DISTRICT

BY KERI WHITE

Fabric + Fashion + Food = Fabulous Row

The 4th Street corridor in the South Street Headhouse District continues to boom. Historic Fabric Row has recently undergone a significant infrastructure and aesthetic upgrade. This comprehensive project includes the installation of 10 new overhead LED light poles and 40 new Center City-style pedestrian lights from Lombard to Christian Streets, the planting of 15 trees and the replacement and repair of multiple broken sidewalks and curbs.

As the physical space improves, new and exciting businesses continue to flock to the area. The existing fabric stores are now interspersed with fashion boutiques, salons and new food and drink options.



BeerLove at 714 S. 4th Street arrived in August. Launched by former attorney Kristen Cevoli and fitness trainer Jonathan Shinnars, this bottle-and-draft shop offers a wide selection of craft beers, an inviting bar, locally sourced snacks, happy hours, tasting events and a membership plan.

The eagerly anticipated **Hungry Pigeon** restaurant at **743 S. 4th Street** is another welcome arrival. Owners Pat O'Malley and Scott Schroeder are no strangers to the restaurant scene. Pat, the pastry chef, returned to Philadelphia after a seven-year stint at New York's renowned Balthazar. Scot, the cuisine chef, runs American Sardine Bar and South Philadelphia Tap Room, both successful venues. They were drawn to 4th Street because of the neighborhood. Pat explains, "We knew we wanted a place that would enable us to cook the way we eat — wholesome comfort food that is responsibly sourced and fully utilized. The breakfast, lunch and dinner for-



mat fit that, and the demographics of this area are perfect — lots of families, long-term residents, a mix of various ages with a lot of sophistication. We also saw great synergy with the neighboring businesses; people come to shop, but they would have to walk several blocks to dine. We can fill that need here."

Scott adds, "We also loved the space — the windows, the corner location, the history appealed to us." They spent much of the winter on do-it-yourself projects, such as chipping away cement to expose an attractive brick wall, enlisting friends and family to provide artistic and graphic design services and identifying purveyors who fit with the restaurant's ethos. The exterior wall that faces Fitzwater Street now displays a mural homage to the historic building, which previously housed Jack B. Fabrics. Artist Maria Tina Beddia, who happens to be Scott's girlfriend, created the work.

Much of the 4th Street energy can be traced back to the efforts of local resident and landlord Paul Markowich, a financial planner by trade who has branched out into real estate. He comments, "I live just off 4th Street, and I see a thriving neighborhood commercial district developing. Selfishly, I started looking at properties that could be refurbished to house things that I would like in my neighborhood — like a high-end beer shop, a family-friendly restaurant, an art gallery or an interesting boutique. And the collaborative nature of all of the businesses is an excellent indicator of success. Everyone here is motivated to work together for the betterment of the area, and we've had great support from Mike Harris and the South Street Headhouse District."

The corridor has become a unique blend of businesses with significant interest from potential new arrivals. Paul concludes, "If in a year or two, you hear people all over the city talking about 4th Street as a destination, our plan will have worked."

Dr. Mae Sakharov, Ed.D

College, Graduate School and Career Counseling
Educational Care at its Finest



Over 90% of the people I have worked with since establishing my practice in 1983 have been accepted by the college of their choice.

Find their success stories at:
www.maesakharov.com

7 Bells Court, Spruce Street & Saint Josephs Way
267-930-8156



10% OFF

Total Food Check
with mention of this ad!

"One of the City's Best Italian Restaurants"

— Citysearch

"Best Veal Parmigiana 7 years in a row"

— In the Spotlight

636 South Street • Philadelphia, PA 19147
215.627.9000 • www.laforno.com

Top 6% of all Realtors in Prudential Network Nationwide
Accredited Luxury Home Specialist
Diamond Award

I am a professional,
full-time real estate agent
as well as your neighbor.

■ **PAMELA D. LAWS**

ABR, ALHS, SRES, ASP



Like many of my clients,
Society Hill is my home.
I specialize in Center City
because I love Philadelphia.
Let me find the perfect
townhome or condo for you!



BERKSHIRE HATHAWAY HomeServices | Fox & Roach, REALTORS

215.790.5688 pam.laws@prufoxroach.com
WWW.PHILADELPHIAPROPERTIES.NET

An independently owned and operated member of the Prudential Real Estate Affiliates, Inc.

Hi Tech. Hi Touch.

A Winning Combination —
in Person and on the Web!



Buying? Selling?

Please call or email your neighbor, Rosemary Fluehr.

Know someone who's Buying or Selling?

Let me know. Referrals are the strength of my business.

Rosemary Fluehr

Associate Broker, GRI



BERKSHIRE HATHAWAY HomeServices

Fox & Roach, REALTORS

215-440-8195 – Direct
215-627-6005 – Office
215-514-9884 – Cell

rosemary.fluehr@foxroach.com
www.rosemaryfluehr.com
530 Walnut Street, Suite 260
Philadelphia, PA 19106



YOU'RE MAKING MOVES. LET US DO THE WORK.



We love Philadelphia.

We know the neighborhoods. With over 27 years of experience, we're experts at what we do.

The McCann Team will provide you with a free estimate of value for your home.
No cost, obligation or hassle!

Check out our video to get to know Mike & his team - you can find it at www.mccannteam.com! While you're there, see what our clients have to say!

Call us or visit our website. We can't wait to hear from you!

Mike McCann "The Real Estate Man" and The McCann Team

BERKSHIRE HATHAWAY
HomeServices

Fox & Roach, REALTORS

Direct: 215.440.8345

www.McCannTeam.com

Office: 215.627.6005

HEADHOUSE FARMERS' MARKET

BY KERI WHITE

Three Springs Fruit Farm

Ben Wenk, whose booth at the Headhouse Farmers' Market is a Sunday mainstay for many neighbors, has roots that run deep in Three Springs Fruit Farm. The Wenk family has been farming in Adams County for two centuries, and they have been on the same 450-acre site since 1901. Ben has a lighthearted way of describing growing up on a family farm: "As a kid, I was given a lot of menial, character-building tasks."

He continues, "By high school, I thought I'd had enough character building, and I decided to move away from farming to pursue my true passion, music. I had been accepted to Penn State University and planned to study music, but even before I enrolled, I started really examining whether that would be a viable, practical way to put food on the table. And I began to question whether I'd still love music if it became a job." Ben also began to see the family farm as something to be proud of, recognizing the importance of the farm and its place in the community of 200 other fruit-growing families in the area. "Before I started at Penn State I had already changed my major from music to agro-ecology with a minor in horticulture, and right around graduation in 2006, we got an email from this organization called The Food Trust asking for farmers to sell at the Headhouse Market."

The rest, as they say, is history. Until that point, Three Springs Fruit Farm had not participated in farmers' markets. Ben saw this as a way for him to add value to the family business and explore a new opportunity. Participating in the market has encouraged Three Springs to diversify their offerings. Primarily known for peaches and apples, they have expanded into vegetables and small fruits.

They have recently partnered with award-winning cookbook author Marisa McClellan, utilizing Three Springs Fruit Farm produce to create small-batch jams, pickles and other jarred delicacies. Ben explains, "This is a great way for us to use fruit that might not sell at market — possibly something that is bruised or not perfect, but will make a wonderful jar of jam."

The farm also has a charitable mission. "We work with the folks at Gleaning Network, who visit the farm twice a week during growing season. They collect anything we can't use or sell, and distribute it to local food pantries and

hunger-relief organizations." They also support LEAF (Leadership Education and Farming), which brings youth together for leadership training combined with culinary, nutritional and agricultural activities.

Lest we think the farmers are on vacation over the winter, Ben explains that they are actually quite busy in the off season: "We spend a lot of time planning for crop rotation, attending conferences and learning about best practices, sustainability and other trends in farming." The forecasting and advance planning requires a staggering amount of lead time. Farmers have to order trees two or three years out, then it's another three years for the trees to mature. They don't reach peak production for another six or seven years. If you've added correctly, that's up to 13 years — if it all goes smoothly.

Ben gives his customers credit for sharing good ideas about using the farm's produce. "I often speak to them about how they enjoy our fruits and vegetables. The best recipe I ever got was from a customer last year at the Headhouse Market — a Trinidadian vegetable stew that had been published in *The New York Times*. I tried it, and cooked with our hot peppers for the first time. The whole house smelled wonderful — spicy, savory, delicious." The recipe can be found at www.cooking.nytimes.com/recipes/1017726-trini-chana-and-aloo.

Ben and his crew are looking forward to the May opening of the 2016 Headhouse Farmers' Market after a long and busy winter. Until then, you can visit The Food Trust's year-round markets. They operate the Clark Park Saturday Farmers' Market at 43rd Street and Baltimore Avenue and the Fidler Square Market at 23rd and Pine Streets. Both venues run throughout the winter, weather permitting.

The Food Trust was founded in Philadelphia in 1992, and today it is a national not-for-profit organization that focuses on education and initiating change, in addition to working with schools, farmers, grocers and policymakers to build healthier communities that are well-informed about healthy food choices. In Philadelphia alone, The Food Trust operates some 25 farmers' markets, including the ever-popular Headhouse Farmers' Market, which is the city's largest outdoor market. If you would like to make a donation to their work, or perhaps volunteer at one of the farmers' markets in the city, please contact nickyuy@thefoodtrust.org or look them up at www.thefoodtrust.org.



Young "Ferd" Wenk and his father, John B. Wenk. Ferd purchased Three Springs Farm in 1901.



Wenk's Tomato Jam



The Food Trust

THE ESTATE HOME AT 4TH AND LOCUST



5th Floor



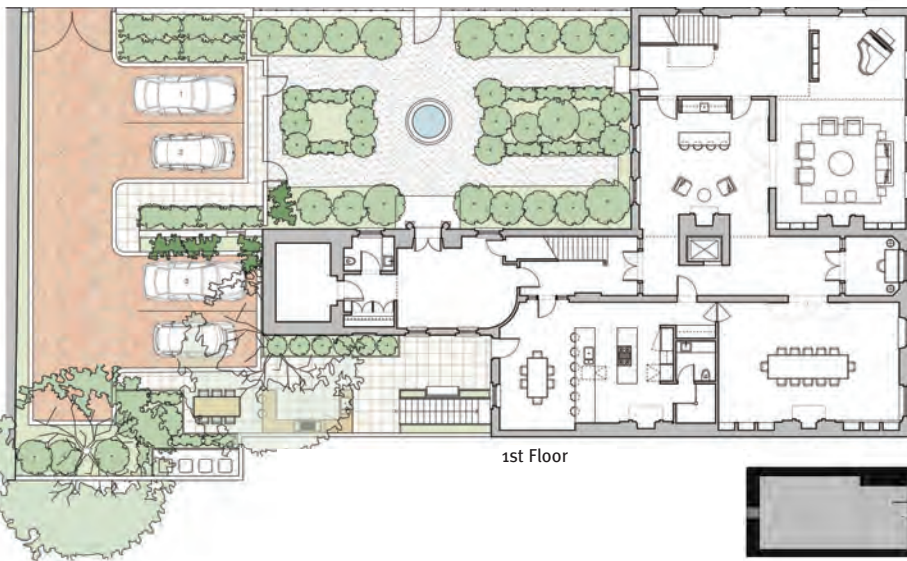
4th Floor



3rd Floor



2nd Floor



1st Floor



AD Allan Domb Real Estate

PHILADELPHIA'S LARGEST SELLING CONDOMINIUM REALTOR® WE COOPERATE WITH ALL REALTORS®
1845 Walnut Street, Suite 2200, Philadelphia, PA 19103 Phone: 215.545.1500 allandomb.com domb@allandomb.com



Electric Vehicle Chargers Update

Councilman Mark Squilla and his staff, as well as SHCA President Bob Curley, with help of the Crosstown Coalition have been instrumental in amending Section 12-1131 of the Philadelphia Code, Department of Streets Regulations Governing the Establishment of Electric Vehicle Parking Spaces. As amended, regulations go into effect February 18. The highlights of the changes are:

- They set criteria to limit the number of special spaces on any given street. These include handicapped spaces, loading zones and electric vehicle parking spaces (EVPS).
- The maximum allowable number of special spaces would be up to three depending on criteria such as length of block and other conditions.
- In blocks with metered parking, no EVPS will be permitted.
- The EVPS is not permanently attached to the address of the permit holder. If there are any safety issues with the device or wiring to it, or if the resident sells his house and moves away, the right to the EVPS is forfeited automatically. A new permit will be issued to other applicants from the waiting list held by Philadelphia Parking Authority.
- Rules and regulations are established for safety issues of the chargers themselves, as well as their wiring and location on the street.
- Rules and regulations require the holder of an abandoned permit to remove chargers and street signs and to repair the sidewalks where the charger and sign were anchored.




An electric vehicle charger in Society Hill.

EXERCISE & SOCIALIZE

Spring is around the corner! Layer up and consider joining one or both of these local groups for some walking and talking.

Tuesdays and Thursdays, 8:15 a.m. Walkie/Talkies meet at Three Bears Park (Delancey Street between 2nd and 3rd Streets) for a one-hour stroll through our historic community. Anyone is welcome to participate in this non-stressful exercise-and-socialize program.

Mondays, Wednesdays and Fridays, 8 a.m. Philly Is Walking In The Park! meets at the fountain in the center of Washington Square (6th and Locust) for a half-hour, self-paced walk through our historic, beautiful park, led by neighbor Dr. Lisa Unger. All are invited to join us.




**SMART
RESPONSIVE
EXPERIENCED
Bari Shor
Real Estate
MatchMaker**

Whether you're selling or buying a home in amazing Center City, Bari Shor cares and *delivers* for you.

I am your neighbor, let me be your Realtor,® too!


**BERKSHIRE
HATHAWAY
HomeServices**
Fox & Roach, REALTORS®

**215-790-5678
Barishor@aol.com
215-546-0550 x 5678**

Thinking about selling your house?

Now is an excellent time! Mortgage rates are low... demand is strong.



**Pat Donohue
REALTOR**


KELLERWILLIAMS.


1619 Walnut Street, Philadelphia, PA 19103
Mobile: 215-990-1902
Office: 215-627-3500
email: patdonohue@kw.com
www.philadelphiatownhouse.com



Hopkinson House

604 S. WASHINGTON SQUARE



Completely renovated 2 bedroom with treetop views of Washington Square from every room! A spacious living room and separate dining area, updated galley kitchen, a double balcony, and ample closet space throughout. 1,200 sf | **\$519,000**

Penn's Landing Square

130 SPRUCE STREET



3 bedroom, 2 bath bi-level home with impressive outdoor deck and entertainment space in a secure gated community in the heart of Society Hill! This sun-soaked home features beautiful maple hardwood floors, a fully renovated kitchen with a large center island, wood cabinetry, and stainless steel appliances, versatile layout that can be easily converted into two bedrooms or two bedrooms plus den, impressive closet and storage space throughout, spacious master suite, and an expansive roof deck and outdoor entertainment space overlooking Delancey Street. 1,630 sf | **\$769,900**

THE LIPPINCOTT

227 S. 6TH STREET



High-end, fully custom 2 bedroom plus den, 3 bathroom home with custom lighting, an open chef's kitchen with granite counter tops and wood cabinetry, brick walls in the living area, 11 foot ceilings with exposed beams, fireplace, private terrace with city views, and beautiful dark oak floors throughout. Parking and storage space in the building are included. 2,189 sf | **\$2,100,000**




Allan Domb Real Estate

PHILADELPHIA'S LARGEST SELLING CONDOMINIUM REALTOR® WE COOPERATE WITH ALL REALTORS®
1845 Walnut Street, Suite 2200, Philadelphia, PA 19103 Phone: 215.545.1500 allandomb.com domb@allandomb.com



5TH STREET DEVELOPMENT CONTRIBUTION FORM

The Society Hill Civic Association has initiated a campaign to fund the 5th Street Development Committee's efforts **to get the most appropriate design and use of the commercial properties on 5th Street, consistent with the history and character of Society Hill. Our goal is to raise \$80,000.**

Please indicate to the right where you wish to direct your donation and write the amount in the space provided.

Help preserve the unique historic character of our community while protecting the value of our homes. If achieving this goal is important to you as a resident of Society Hill, please consider a tax-deductible donation.

Total Amount: _____ \$100 _____ \$200 _____ \$500 _____ \$1000 _____ Other \$ _____

Check one: _____ You may publish my name in the list of donors. _____ Do not publish my name.

Make checks payable to: **Society Hill Preservation Foundation***

Please fill out this form, clip and mail it to: SHCA, P. O. Box 63503, Philadelphia, PA 19147.

For online contributions, go to www.societyhillcivic.org, click on 5th Street Development and then DONATION LINK.

Name _____ Email _____

Address _____

City, State, Zip _____ Phone _____

***The Society Hill Preservation Foundation is SHCA's 501(c)(3) non-profit which allows tax-deductible contributions to be made for restricted uses such as those outlined here.**

For more information, contact Martha Levine at marthalev6@gmail.com or 215-629-0727.

5TH STREET DEVELOPMENT CAMPAIGN DONORS

We thank the 144 generous contributors to this campaign, listed below. Our goal is to raise \$80,000. As of February 12, we have raised \$28,000.

Champions \$1,000-\$2,500

Anonymous
Manja Lyssy & Theodore Schiffman
Nadya K. Shmavonian
Christophe Van den Bulte
James & Anna Whitesell

Benefactors \$500

Richard Cohen
Geoffrey & Lee Dennis
Janis & Stephen Goodman
Charles & Lucinda Landreth
Martha Levine & Howard Sedran
Madeline Miller
David Pierson & Barrie Trimmingham
Ted Robb
Joseph Waldron
Carolyn Walter & Bruce Bryen
Ann & Doug Wilkerson

Advocates \$200-\$300

Martha Moore
Jeanette & Oliver Boulind
Jo Ann Buller
Christine Jacobs
Barbara Oldenhoff
Mr. & Mrs Don Roberts, Jr.
Ronn & Ellen Shaffer
428 Lombard Street Owners
Anonymous

Anonymous
Peter Bloomfield
Garrett Brown & Ellen Shire
Ronald & Claudia Carabelli
Roger & Lucy Cox
Sidney & Shirley Curtiss
Elizabeth Doolan
Andrea & Alexander Ehrlich
Laurence Gavin
Dr. Robert Gill
Terry Grayboyes
Peter & Gail Hearn
Richard Hershkovitz
Dr. William & Mrs. Jantsch
Richard Ketterer
John & Rodanthi Lambris
Nancy Lanham
Robert & Leslie LaRocca
Bruce & Joye Lesser
Bunny & JB Levyn
Rosanne Loesch & Yves Quintin
John & Gen Nelson
Suzie & Joseph Pattison
Ned & Nancy Scharff
Paul & Barbara Schraeder
Ann & Larry Spector
Richard & Margaret Ullman
Kim Williams
Gail Winkler & Roger Moss
Val & Roger Wood
Steve Zettler & Cordelia Biddle

Supporters \$100-\$150

Greg & Sue Dudkin
Carol Fixman & Stephen Kobrin
Robert & Rochelle Hirsh
William & Serena Skwersky
Philip Alperson & Mary Hawkesworth
Anonymous
Anonymous
Harry & Marilyn Appel
Jonathan Auerbach & Karoline Adler
David & Suzanne Auten
Fran & Aaron Beyer
Jean Blumberg
Dale Brazale
Francisco Carreno
Joel Chernock
Edwin & Patricia Coyle
Bill & Kathleen Creelman
David DeVoe
Anne & Steven Docimo
Pat Dowden
Frederic & Karen Edelstein
John Erickson & Mary Zaleznik
Carolyn & Joseph Evans, Jr.
Dr. Julian & Sunny Feldman
Saul & Stephanie Finkle
Rosemary Fluehr
Susan Fryd
Phil & Carol Greco

Diane Harrison & Steve Datlof
Gail Hauptfuhrer
Peter & Gail Hearn
David & Lolly Hoffman
Richard & Judith Hurtig
George Koch & Santo DiDonato
Donald & Vicki Kramer
Eric & Sandy Kruger
Peter & Kathy Linneman
Sissie & Herb Lipton
Jack & Kathleen Mathis
Frank Mazullo & Marcos Urdaneta
Stephen W. Miller
Jim & Marsha Moss
James & Camille Orman
Daniel Promislo
Brian Rider
Andrew Rosenbach & Brooke Smith
Diane Rossheim
Christine Rother
Linda Sacks
Reuben Saideman
Joseph Schatanoff
Jennifer Schwartz
Susan & William Schwartz
Manoj & Monika Shirodkar
Linda Skale
Donna & Howard Sudak
Joan & Tom Tropp
Robert Toryak

George & Carol Vinci
Wallace Wing & Sherry Shamansky
Friends Under \$100
Pamela Sinkler Todd
J. Bavaria Borislow
Sheila & Walker Brown
Madeleine Champion
Jane Cooper & William Shoff
George Dowdall
Rebecca Fierman
Maria Galantino
Roslyn & Richard Jay
Lorna Katz Lawson & John Lawson
Victoria Kirkham
Ann & John W. Ku
Dan Kurkowski
Nicholas Piccone
Melissa & Brian Pinheiro
Sam Sadtler
Michael Scolamiero
Ruth Sine
Beth & Harry Sommer
Jan Stephano
Mark & Ruth Valentine
Dot & Jerry Yablun
Preston & Carol Feden
Marcia Rogers
Mary Carmichael
Iris Levine

\$ _____ **Legal Services:** To assert the rights of the Community under the land use and zoning code ordinances, with regard to the redevelopment of the 5th Street properties, including representation at hearings before the Zoning Board of Adjustment, Planning Commission and Historical Commission.

\$ _____ **Professional Planner Services:** To aid in the development of an overall plan for Society Hill, that will include zoning reclassification of properties and creation of a new protective zoning ordinance for the Society Hill District.

\$ _____ **Unrestricted Donation:** Please allocate my donation for the above purposes as needed.

**Plumer & Associates, Inc.
Realtors**


Plumer

Center City's largest independent Realtor.
Serving Philadelphia since 1923.

**Residential,
Commercial,
and Investment
Real Estate**

For a complete listing of Center City properties visit our website:
www.plumerre.com

226 South Street, Philadelphia
info@plumerre.com
215 922 4200




Our record speaks for itself.

**Kathy, Patrick and the
Conway Team**

BERKSHIRE HATHAWAY HomeServices
Fox & Roach, REALTORS

conwayteam.com • kathy@conwayteam.com
215-266-1537 • 215-627-6005

DAMON MICHELS, REALTOR



cell 610.731.9300
office 610.668.3400
Damon@DamonMichels.com
www.DamonMichels.com

Specializing in The Main Line and Center City

180 HOMES SOLD IN 2014!

BERKSHIRE HATHAWAY | **Fox & Roach, REALTORS®**
HomeServices



Jan Stephano ABR, CSR, CNE

*Lives, Knows,
Sells Center City!*

**45 years your neighbor
28 years your realtor**

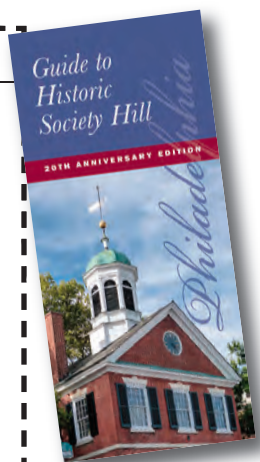
Plumer & Associates, Inc. Realtors 

215.922.3600 x219
jstephano@plumerre.com www.janstephano.com

Guide to Historic Society Hill Now Available for Purchase

If you would like to secure one or more copies, please fill out the form below and forward with a check or money order to SHCA, P.O. 63503, Philadelphia, PA 19147. Make check payable to the **Society Hill Preservation Fund**.

<input type="checkbox"/> One (1) copy	\$10.00	Send Guides to:
plus shipping and handling	\$4.00	Name _____
Total Cost:	\$14.00	Address _____
<input type="checkbox"/> Two (2) - 10 copies		Apt. # _____
_____ copies x \$8 each = \$ _____		City, State, Zip _____
plus shipping and handling	\$10.00	
Total Cost: = \$ _____		
<input type="checkbox"/> More than 10 copies		
_____ copies x \$7 each = \$ _____		
FREE shipping and handling		



MEMBERSHIP REPORT

BY MATT DE JULIO

2016 Membership Drive on Par with Last Year

By early February, 816 Society Hill residents had already renewed their association membership — on par with the same time last year. Winners of the restaurant certificates for those who had renewed by December 31, were Taylor Custis and Anne & Joseph Jacovini. Congratulations to these lucky folks.

So far 75 new members have signed up this fiscal year, well ahead of only 43 who had signed up by this time last year, but 329 current members have not yet responded to two mailings. If you have delayed in sending in your renewal, or wish to join, please do so today.


As a special bonus this year, every member can receive a FREE copy of the recently published *Guide to Historic Society Hill*. Just email mattdejulio@aol.com and let him know you wish to be put on the distribution list. You may receive it electronically if you prefer that over the spiral-bound edition. The book will retail for \$10 and will be available at Head House Books, 619 South 2nd Street. Use the order form on page 24 to purchase extra copies by mail.

We welcome each of the over 3,600 households in Society Hill to join SHCA. Your civic association helps protect your real estate investment by funding many of our improvement projects, as well as providing subsidies to neighbors who plant trees and fix their sidewalks. We help enhance your quality of life when we advocate on your behalf regarding zoning changes, real estate taxes, crime problems and traffic issues. All of this is accomplished through the hard work of our dedicated board of directors, committee members, block coordinators and, most importantly, your membership dues.

Without member dues, SHCA would cease to function. Protect your neighborhood and your real estate investment. Sign up today!

Email Mattdejulio@aol.com with questions or comments which will be shared with our board members representing every quadrant in our unique, historic neighborhood.

Matt De Julio is a retired publishing executive. He has served SHCA as its administrator since 2001.



Membership Application

Name _____

Address _____ Apt. # _____

City, State, Zip _____

Home Phone _____

Work Phone _____

Email (print clearly) _____

IMPORTANT: Today, most everyone communicates via email. Please be sure that we have your current email address — so that you can receive important updates between publication of our community newsletter. All SHCA emails will be judiciously screened, and rarely will we send emails more than once a week. Nor will we share your email address with anyone else. This convenient, 21st-century system helps save our civic association postage costs, while keeping you regularly informed.

<p>Residential Memberships</p> <p><input type="radio"/> \$ 50 Basic Household Membership</p> <p><input type="radio"/> \$ 40 Senior/Student/Single</p> <p><input type="radio"/> \$ 100 Federal Friend</p> <p><input type="radio"/> \$ 150 Georgian Grantor</p> <p><input type="radio"/> \$ 300 Jefferson Benefactor</p> <p><input type="radio"/> \$ 500 Washington Benefactor</p> <p><input type="radio"/> \$ 1,000 Benjamin Franklin Benefactor</p>	<p>Business Memberships</p> <p><input type="radio"/> \$ 100 Institutions — 5+ employees</p> <p><input type="radio"/> \$ 60 Institutions — fewer than 5 employees</p>
--	---

Additional Contributions

\$ _____ Washington Square Beautification	\$ _____ Franklin Lights
\$ _____ Sidewalk Cleaning/Graffiti Removal	\$ _____ Tree Tenders
\$ _____ Zoning and Historic Preservation	\$ _____ McCall School

Total Enclosed \$ _____

Charge VISA/MasterCard:

Number _____ Exp Date _____

Signature _____

The following topics are of special interest to me. I welcome receipt of email updates on these topics.

<input type="radio"/> Clean-Up Day	<input type="radio"/> Washington Square	<input type="radio"/> Zoning & Historic Preservation
<input type="radio"/> Franklin Lights	<input type="radio"/> Social Events	<input type="radio"/> Fundraising
<input type="radio"/> Dilworth House	<input type="radio"/> Property Taxes	<input type="radio"/> Local Crime
<input type="radio"/> Reporter	<input type="radio"/> Casino Issues	<input type="radio"/> Incidents and Alerts

Please return completed application to:
Society Hill Civic Association, P.O. Box 63503, Philadelphia, PA 19147

NIFTY NEIGHBORS IN MY OWN BACKYARD

BY JANE BIBERMAN

Deen Kogan

“Lady of Mystery” Is Planning a Third Act

It was with regret that Deen Kogan announced she was closing the doors of Society Hill Playhouse, which she and her late husband, Jay, founded in 1959. “But it was time,” she explains. After more than a half-century staging cutting-edge theater, Deen made news when she told the local press that the landmark playhouse at 507 S. 8th Street would mount no more productions after April 1.

But it’s far from the last act for Deen, who will continue to stage plays and hold readings in a building she owns in Port Richmond on the Delaware River. Nor does she plan to sell her home on Delancey Street. As much as the playhouse, Deen is an integral part of the neighborhood she loves so well and helped to develop.

A native of Hagerstown, Maryland, Deen met Jay on the first day of acting class at Temple University. “I knew at once that I was going to marry him,” Deen relates. “He didn’t know it, but I did.” Marry they did and then together went on to graduate school at the University of Denver. “Jay was interested in staging opera, and we were both devoted to contemporary playwrights,” she says. “After graduate school, we spent a year abroad, going to opera and theater all over Europe.”

Then they decided it was time to return home and make a living. In 1959, they bought the David Garrick Hall, built about 1901. With its ornate chandelier, pressed-tin walls and beautiful ballroom, it was used for weddings, confirmations and other affairs. With the help of friends and neighbors, the Kogans spent a year renovating it. Society Hill Playhouse, a nonprofit, was born in 1960 with a stage adaptation of Friedrich Dürrenmatt’s *The Deadly Game*.

“Our mission was to showcase contemporary American and European playwrights like Sartre, Genet, Pinter and Brecht,” Deen explains. They also put on popular fare like *Nunsense*, which ran for nine years. “When it became apparent in 1986 that the musical was going to run for awhile, I asked my brother, Stephen Falk, an architectural engineer, if he could make a second theater on the first floor in what was then a rehearsal space. He created The Red Room cabaret.”

Both Jay and Deen acted, directed and trained many of their performers and technicians. The Kogans also founded the Philadelphia Youth Theater, which catered to 15 to 19-year olds. “We were always interested in social interaction with the community,” says Deen. “We taught stagecraft to generations of schoolchildren and toured nursing



Tonka and Deen Kogan

homes and residences throughout the city. It was very gratifying.” After Jay died in 1993, Deen carried on. In 2009, the Theatre Alliance of Greater Philadelphia presented her and Jay, posthumously, a Barrymore Award for Excellence in Theatre. The Jay and Deen Kogan Fund at The Philadelphia Foundation was established to support emerging theater in the city.

In the early years of the Playhouse, the Kogans lived on Panama Street, just around the corner from Dirty Frank’s. When they outgrew the house, they looked for something

larger. “I remember visiting Society Hill — in the redevelopment era — and being horrified by the sight of men in undershirts playing cards in the middle of the street,” Deen recalls. “I swore I’d never live here.” She now shares the house with her beloved Doberman pinscher, Tonka, who accompanies her to and from work. “I’ve had Dobermans for 50 years,” says Deen. “One of them had the distinction of wetting on Mayor Dilworth’s leg when he was walking his standard poodle in what is now Abbott’s Square. I was mortified but he only said, ‘My dear, it’s a dog.’” You can see their picture on the wall of the Palm restaurant (shown here). A great dog lover, Deen was a longtime board member of Morris Animal Shelter.

Deen’s Society Hill house, plastered with “Beware of Dog” signs in many languages, was also home to some 30,000 mystery books at the time of Jay’s death. “We shared a passion for crime fiction,” Deen relates, adding that she’s moved the collection, now numbering 40,000 volumes, to the third floor of the Port Richmond building. Over the years, she’s chaired four World Mystery Conventions attended by thousands of people, as well as numerous national conventions. She’s chair of the International Crime Writers’ Dashiell Hammett Award Committee and reviews crime fiction for several mystery magazines.

Deen’s plans for the immediate future are no mystery. “We’re holding an indoor ‘yard sale’ at the Playhouse March 13 and a ‘Goodbye Party’ March 25, to which the community is invited.”

It will be a long goodbye.

Jane Biberman, freelance writer and former editor of *Inside Magazine*, has contributed to a variety of publications.



HIGH INTEREST GO ANYWHERE CHECKING*

62 Reasons
to Switch
Today!

Peicha Chang
President & Owner,
Falls Flowers



(267) 295-6420
EastRiverBank.com



*Additional terms apply.

Christopher P. McGill, President & CEO

EAST FALLS | ROXBOROUGH | OLD CITY (36 North 3rd Street)

EVERY ALLERGY IS DIFFERENT



ALLERGY & ASTHMA SPECIALISTSSM CAN TREAT YOURS

THE AREA'S MOST TRUSTED SOURCE FOR ALLERGY EXTRACT

Our 12 Fellowship-trained, Board Certified Allergists are highly experienced in prescribing safe, effective allergy extracts - **formulated specifically for each patient.**

All extracts are produced in our onsite lab under allergist's supervision.



1-800-86COUGH
AllergyAndAsthmaWellness.com

ESTATE HOMES



The Estate Homes at Parc Rittenhouse:

Develop your dream home at the Estate Homes at Parc Rittenhouse! A once in a lifetime opportunity to customize raw space in one of the most stunning and sought-after condominiums on Rittenhouse Square! The Estate Homes will offer 20 custom 2, 3 and 4 bedroom homes from 1,500 to 6,000 square feet that will feature a private lobby and private elevators, as well as luxury services and amenities, including a 24-hour door person, parking, a state of the art fitness center, lounge, and pool. Prices range from \$600 - \$1,000/ft. For more information on these exclusive homes, please visit www.estatehomesatparc.com.



The only opportunity on Rittenhouse Square to get the exact amount of space you need to build your dream home.

One of our suggested designs: 3 bedrooms, 3.5 bathrooms, home theatre and office. Overlooks Rittenhouse Square. 5,420 | Est. **\$4,600,000**

AD Allan Domb Real Estate

PHILADELPHIA'S LARGEST SELLING CONDOMINIUM REALTOR® WE COOPERATE WITH ALL REALTORS®
 1845 Walnut Street, Suite 2200, Philadelphia, PA 19103 Phone: 215.545.1500 allandomb.com domb@allandomb.com

